

MARCH 30TH,  
2017



# NEWS FROM THE HIVE

[THE WEBSITE](#) [INSTAGRAM](#) [FACEBOOK](#) [RAVELRY](#)



## **FARMHOUSE CANDLES: NEW SCENTS FOR SPRING**

You know how much we love our **Leelanau County-made candles** here at Wool & Honey....well, we're absolutely ecstatic about the brand-new Spring scents: **Fern + Grass and Lavender + Heather**. One of Beth's requirements when creating a custom scent is that the fragrance must fill a room within an hour; whether you're doing some deep cleaning or entertaining a house full of guests after a quiet winter, we think these candles make any room feel like Spring.



Find [Farmhouse Candles HERE](#).

### **■ SNAKE SKIN COWL KIT:**

#### **A POP OF COLOR FOR YOUR SPRING WARDROBE**

There's not much that gets our hearts aflutter quite like a beautiful gradient. But as striking as they are to look at, customers are always asking what they can do with them. This cowl incorporates three of our favorite things: gradients, stripes AND Chevron. Knit in a tube, this pattern is a simple, two-round repeat (the second round being just the knit stitch!)--a great pattern for chatting and knitting with friends. This cowl uses the most of every color to maximize the entire gradient range, as well as a lovely neutral color. This cowl is approximately 50" long and can be wrapped once or twice around your neck.



Each **kit** comes with one gradient kit, two skeins of Brooklyn Tweed Arbor and an easy-to-read pattern.

Find the **Snake Skin Cowl Kit** **HERE.**

## **YARN INSPIRED BY THE BEAUTY OF MICHIGAN: THE COLORS OF LEELANAU**

"Spring work is going on with joyful enthusiasm."

*-John Muir*

After a long, gray winter, it's safe to say we're all ready for a bit of color.

**\*\*\* order by April 15th \*\*\***

# Colors of Leelanau



order by April 15th



Budding Apple



Clover Patch



Whaleback Pine Grove



Ursa Major



Not a member?  
Join today!



Icy Shores



Lakeside Lavender



Moonlit Ski



Lake Michigan Northern Lights



Birch Bark



Petoskey Stone



Big Glen



Cottage Crocus

It's been almost three full years since we launched our exclusive **Sleeping Bear Yarn Club** and it has transformed into something we couldn't have dreamed up.

Because our club continues to grow every month, there are many, many customers who've only just joined us--**and have missed out on some of the previous months**. And almost *everyone* has said that they'd love to get their hands on at least one more skein of one colorway or another.

We're opening up the opportunity for everyone who's hoping to get another shot at our exclusive yarns. We've reached out to the brilliant dyers who produced colorways for our Sleeping Bear Yarn Club to come up with **one more limited edition run** for the spectacular colors from the first three years.

You can also order the stitch markers, available in sets of five.

**And, as always, these yarns and markers are available to you at 10% off retail prices.**

However. **You must be a Sleeping Bear Yarn Club member.**

We've said from Day One that these colors are exclusive to our members and we still stand by that. Before you can order any of the colorways below, you first have to join the club.

After that, you can order any of the colors between now and April 15th.

After *that*, they may be unavailable forever.

If you've ever been on the fence about joining the Sleeping Bear Yarn Club, now would be the time to join.

**Club memberships are available for 3, 6 and 12-months,**  
**with the ability to pay monthly, quarterly or in full.**  
**A membership of any kind (3, 6 or 12-month) will grant you access**  
**to the colors pictured above.**

**Not a current member?**

Sign up **HERE**.

**Already a member?**

Click **HERE** to order the **Colors of Leelanau.**

We'll be taking pre-orders for each of the following colorways for a VERY limited time--  
through **April 15 only**. Your orders will ship with the May 2017 package.



Leelanau Lady's Slipper



Sailor's Delight



Northport Sunrise



Emperor Francis Cherry



Cedar Cardinal



Bay Lane Bonfire



Red Osier Dogwood



M-22 Color Tour



Schomberg Sugar Maple



Star Thistle Honey



Dune Climb



Sonny's Farm Stand



Budding Apple



Clover Patch



Whaleback Pine Grove



Icy Shores



Moonlit Ski



Big Glen



Ursa Major



Lakeside Lavender



Lake Michigan  
Northern Lights



Cottage Crocus



Isadore Lilac

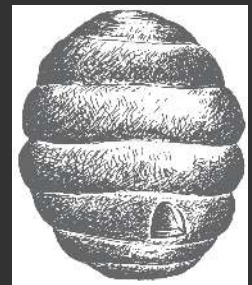


[WEBSITE](#) | [BLOG](#) | [FACEBOOK](#) | [RAVELRY](#) | [INSTAGRAM](#)

## WOOL & HONEY

(231) 228-2800  
thebuzz@woolandhoney.com

<http://www.woolandhoney.com>



*Wool & Honey is a bricks-and-mortar yarn shop located in Cedar, MI, just 15 minutes west of Traverse City, smack dab in the middle of The Most Beautiful Place in America.*

*We love cherries, wine, beautiful beaches and you guessed it--yarn.*

*Can't stop in to see us? We ship worldwide every day.*

© 2016 Wool & Honey. All Rights Reserved.