

APRIL 15TH,  
2016



# NEWS FROM THE HIVE

[THE WEBSITE](#) [THE BLOG](#) [FACEBOOK](#) [NEWSLETTER](#)  
[ARCHIVES](#) [RAVELRY](#)



## YARN INSPIRED BY THE BEAUTY OF MICHIGAN: THE COLORS OF LEELANAU

"Spring work is going on with joyful enthusiasm."

*-John Muir*

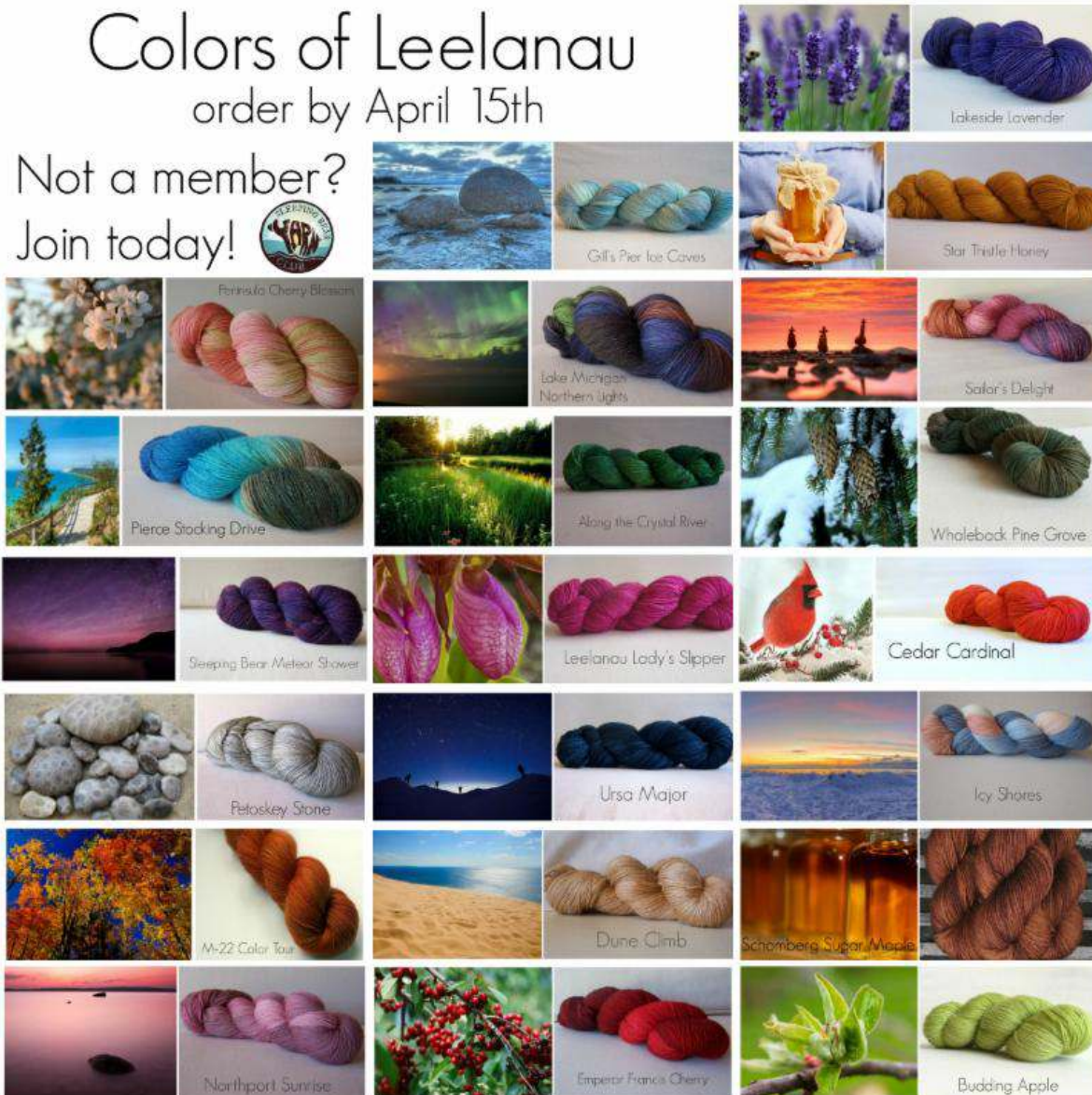
After a long, gray winter, it's safe to say we're all ready for a bit of color.

**\*\*\* EXTENDING OUR DEADLINE TO APRIL 17th \*\*\***

# Colors of Leelanau

order by April 15th

Not a member?  
Join today!



It's been almost two full years since we launched our exclusive **Sleeping Bear Yarn Club** and it has transformed into something we couldn't have dreamed up. Year Three begins in May!

Because our club continues to grow every month, there are many, many customers who've only just joined us--**and have missed out on some of the previous months.** And almost everyone has said that they'd love to get their hands on at least one more skein of one colorway or another.


So. We're opening up the opportunity for everyone who's hoping to get another shot at our exclusive yarns. We've reached out to the brilliant dyers who produced colorways for our Sleeping Bear Yarn Club to come up with **one more limited edition run** for each of the spectacular colors from the first two years.

You can also order any of the stitch markers, available in sets of five.



*Petoskey Stone: our state stone and one of the most gorgeous gray yarns we've ever seen.*

**And, as always, these yarns and markers are available to you at 10% off retail prices.**



### Colors of Leelanau

order by April 15th

Set of 5 Precious Stone Stitch Markers

- Beach Glass
- Blue Fluorite
- Tanzanite
- Leland Blue
- Navy Impression Jasper
- Peridot
- Olive Jade
- Green Aragonite
- Frankfort Green
- Lake Michigan White Quartz
- Famosite
- Petoskey Stone
- Picture Jasper
- Tiger Eye
- Honey Jade
- Peach Aventurine
- Red Carnelian
- Goldstone
- Rose Quartz
- Thomsonite
- Dog Teeth Amethyst
- Coral
- Dolomite
- Pink Tiger Eye



However. **You must be a Sleeping Bear Yarn Club member.**

We've said from Day One that these colors are exclusive to our members and we mean it. Before you can order any of the colorways below, you first have to join the club.

After that, you can order any of the colors between now and April 17th.

After *that*, they may be unavailable forever.

**Club memberships are available in 3, 6 and 12-month increments.**  
**A membership of any kind (3, 6 or 12-month) will grant you access to the colors pictured above.**

**Not a current member?**

Sign up **HERE.**

**Already a member?**

Click **HERE** to order the **Colors of Leelanau.**

We'll be taking pre-orders for each of the following colorways for a VERY limited time-- through **April 17 only**. Your orders will ship with May's package.\*\*\*

You'll notice that not every month from the original lineup is included. That's because some of the dyers were unavailable to recreate their original colorway. If you have one of those original skeins, hang on to it like your life depends on it.

Er, we mean, *knit with it*. Who hoards yarn anyway?





Petoskey Stone



M-22 Color Tour



Northport Sunrise



Lake Michigan  
Northern Lights



Along the Crystal River



Leelanau Lady's Slipper



Ursa Major



Dune Climb



Emperor Francis Cherry



Lakeside Lavender



Star Thistle Honey



Sailor's Delight



Whaleback Pine Grove



Cedar Cardinal



Icy Shores



Schomberg Sugar Maple



Budding Apple

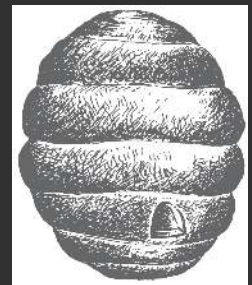
*\* \* \* Because all of our dyers are small companies (and often, they're one-woman shows), there is a chance that ship times may be slightly delayed. If so, we'll be sure to let you know when to expect your package.*

[WEBSITE](#) | [BLOG](#) | [FACEBOOK](#) | [RAVELRY](#) | [INSTAGRAM](#)

## WOOL & HONEY

(231) 228-2800  
thebuzz@woolandhoney.com

<http://www.woolandhoney.com>



*Wool & Honey is a bricks-and-mortar yarn shop located in Cedar, MI, just 15 minutes west of Traverse City, smack dab in the middle of The Most Beautiful Place in America.*

*We love cherries, wine, beautiful beaches and you guessed it--yarn.*

*Can't stop in to see us? We ship worldwide every day.*

© 2016 Wool & Honey. All Rights Reserved.