

APRIL 14TH,  
2017



# NEWS FROM THE HIVE

[THE WEBSITE](#) [BLOG](#) [INSTAGRAM](#) [FACEBOOK](#) [RAVELRY](#)



## **FRINGE PORTER BIN: NOW IN BLACK**

The **Fringe Supply Co Field Bag** has become a favorite among knitters by being as hard-working as it is good-looking, and now we bring you the Porter Bin - a bigger, even more rugged project bag for sweater knitters or those who like to keep multiple WIPs in one bag.

And after listening to multiple requests, it's now available in  
**BLACK.**



**The Porter** is heavy-duty cotton canvas with multiple interior pockets and a wide flat bottom - it sits upright and open, and stores flat when not in use. It's great for storage, for organizing all kinds of projects, for road trips (so great for road trips!), or for sitting at the ready next to your favorite chair.

Find the **Porter Bin**--in the NEW black and classic white--**HERE**.

**48 HOURS TO ORDER**  
**PAINTED TRILLIUM**



*The May 2017 selection for the **Sleeping Bear Yarn Club:**  
**Painted Trillium.***

Dyed exclusively for us by Bethany of Woolberry Fiber Co. in Wisconsin, this delicate, lightly speckled yarn reminds of us those white-and-pink-covered hillsides in the deep Northern Michigan woods every Spring. The Painted Trillium, the variety with a deep magenta center, is still considered endangered in Michigan.

***\*\*\* pre-order by April 17th \*\*\****



May's delightful little package will include a skein of Woolberry Fiber Co. Simple Sock (75% superwash Merino wool, 25% nylon--463 yds, 100 g), a Pink Lepidolite stitch marker and your choice of the Stardust Shawl, the Contorta Socks or the Petra Baby Sweater Pattern, as well as the free gifts for NEW 12-month members, thank-you gifts for Year Two members and Leelanau Lifetime Members.\*

*\*Read all about the [Sleeping Bear Yarn Club and sign up HERE.](#)*

## **YARN INSPIRED BY THE BEAUTY OF MICHIGAN: THE COLORS OF LEELANAU**

"Spring work is going on with joyful enthusiasm."  
-John Muir

After a long, gray winter, it's safe to say we're all ready for a bit of color.

**\*\*\* EXTENDING the deadline! \*\*\***  
**\*\*\* order by April 17th \*\*\***



Budding Apple



Clover Patch



Whaleback Pine Grove



Ursa Major



Icy Shores



Lakeside Lavender



Isadore Lilac



Moonlit Ski



Lake Michigan Northern Lights



Birch Bark



Big Glen



Cottage Crocus



Petoskey Stone

# Colors of Leelanau



order by April 15th

Not a member?  
Join today!

It's been almost three full years since we launched our exclusive **Sleeping Bear Yarn Club** and it has transformed into something we couldn't have dreamed up.

Because our club continues to grow every month, there are many, many customers who've only just joined us--**and have missed out on some of the previous months.** And almost *everyone* has said that they'd love to get their hands on at least one more skein of one colorway or another.

We're opening up the opportunity for everyone who's hoping to get another shot at our exclusive yarns. The dyers are whipping up **one more limited edition run** of the spectacular colors from the first three years.

You can also order the stitch markers, available in sets of five.

**And, as always, these yarns and markers are available to you at 10% off retail prices.**

However. **You must be a Sleeping Bear Yarn Club member.**

We've said from Day One that these colors are exclusive to our members and we still stand by that. Before you can order any of the colorways below, you first have to join the club.

After that, you can order any of the colors between now and April 17th.

After *that*, they may be unavailable forever.

If you've ever been on the fence about joining the Sleeping Bear Yarn Club, now would be the time to join.

Club memberships are available for 3, 6 and 12-months,  
with the ability to pay monthly, quarterly or in full.  
A membership of any kind (3, 6 or 12-month) will grant you access  
to the colors pictured above.

Not a current member?

Sign up **HERE**.

Already a member?

Click **HERE** to order the Colors of Leelanau.

We'll be taking pre-orders for each of the following colorways for a VERY limited time--  
through **April 17 only**. Your orders will ship with the May 2017 package.



Leelanau Lady's Slipper



Sailor's Delight



Northport Sunrise



Emperor Francis Cherry



Cedar Cardinal



Bay Lane Bonfire



Red Osier Dogwood



M-22 Color Tour



Schomberg Sugar Maple



Star Thistle Honey



Dune Climb



Sonny's Farm Stand



Budding Apple



Clover Patch



Whaleback Pine Grove



Icy Shores



Moonlit Ski



Big Glen



Ursa Major



Lakeside Lavender



Lake Michigan  
Northern Lights



Cottage Crocus



Isadore Lilac

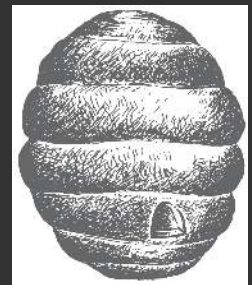


[WEBSITE](#) | [BLOG](#) | [FACEBOOK](#) | [RAVELRY](#) | [INSTAGRAM](#)

## WOOL & HONEY

(231) 228-2800  
thebuzz@woolandhoney.com

<http://www.woolandhoney.com>



*Wool & Honey is a bricks-and-mortar yarn shop located in Cedar, MI, just 15 minutes west of Traverse City, smack dab in the middle of The Most Beautiful Place in America.*

*We love cherries, wine, beautiful beaches and you guessed it--yarn.*

*Can't stop in to see us? We ship worldwide every day.*

© 2016 Wool & Honey. All Rights Reserved.