



New Fall Hours

(effective 10/28)

Monday-Friday:
10 am to 4 pm

Saturday:
9 am to 5 pm

Visit Us Online!



www.woolandhoney.com



Mark your calendars:

Saturday, November 2
HexiPuff Day
9 am to 5 pm

What the heck is a hexi puff?

Wheee! The beekeeper's quilt! Made of little stuffed honeycomb shaped puffy pockets. Use leftover scrap sock wool & it doesn't have to be lined because

(Early) Seasons Greetings!

One third of the way there....it's hard to believe that Christmas really is coming. (Although that snow last week was a clear sign that we're headed in that direction!)

What an awesome weekend, y'all! We were slammin' on both Friday and Saturday--so good to see so many knitters come through the shop in two days. It was great to catch up with so many of you...Sasha loved meeting all of my friends!

We have several winners to contact after our in-house raffle drawing; we'll be calling each of the winners throughout this week. And our HUGE shipment of pre-ordered Leland Blue yarn will be making its way to mailboxes across the US tomorrow--you're going to love it!

* * * * *

At Wool & Honey, we believe that the best way to celebrate the holidays is with a handcrafted gift.

Something special--a little slip of a silk scarf, a pair of fuzzy, wooly mitts, a hand knit ornament--that with a little time, a little money and a little foresight could become the most treasured gift you give all year.

Every weekend between now and December 25th, you'll receive an email revealing a special pattern we're featuring at the shop--one that can easily be tackled within the course of a week. (With a little effort, of course--these projects don't knit themselves!) These patterns are super simple, even for beginner knitters. We make it that way because we realize that in addition to your knitting, there's a good chance you've got a few other things to tend to between now and the holidays. (Ahem!) Knitting should be *fun*, not work. And *certainly* not stressful. Most of these projects are One-Skein Wonders--a pretty fantastic way to see light at the end of the knitting tunnel, even when you're elbow-deep in cookie dough. With 12 full weeks ahead of us, if you pace yourself and try your best to keep up, you'll have a nice collection of gifts come December 25th.

it's puffy & double sided! The honeycombs are fun to make because they're smushy, cute & feel like a little finished project all by themselves.

We'll be here all day Saturday teaching you how to make these sweet little puffs, give you ideas for their application (besides just the fully finished quilt--lots of smaller options!) and providing tutorials on skills such as clever cast-ons, seaming techniques and duplicate stitch for those sweet little surface designs.

We'll have **individual patterns**, full kits and new sock yarn available--you choose your level of commitment!

No charge.

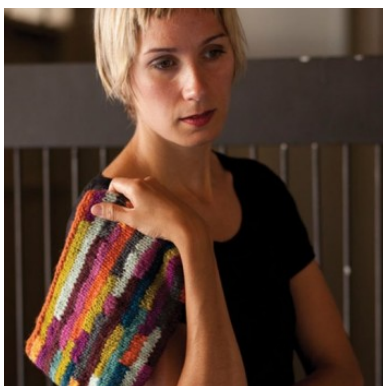
The 12 Knits of Christmas 2013

Missed out on the previous weeks' kits? Find them all [HERE](#).

Week One: The Griswold Family Stockings Kit



Week Two: Stripes Interrupted Clutch



Good luck, friends!

* * * * *

This year, just like last year, there are several ways to knit for everyone on your list. **The Twelve Knits are being sold as kits**--kits complete with yarn, pattern and any other accoutrements, with the option of adding needles if you need them. You can purchase one for delivery right to your doorstep or you can reserve one for pick-up at the shop.

And for those of you who've got a mountain of stash to knit through, we're offering a pattern-only option as well. Within 36 hours of your purchase, your pattern will be e-mailed to you in an easy-to-read PDF format that you can save and print as many times as you'd like. This year, we've added plenty of other kits (and yarn, patterns, needles and gifts, too!) to our website,

www.woolandhoney.com.

Take a peek around while you're shopping--there's a pretty good chance you'll find something you can't live without!

Orders over \$75 always ship FREE.

* * * * *

But here's the best part:
for every single purchase you make
(pattern, kit, additional yarn, etc),
your name will be entered to win one of:

Three \$25 gift certificates

Two \$50 gift certificates

- and -

**One \$100 gift certificate
to Wool & Honey!**

(either in-house or on our website)

The more Twelve Knits of Christmas purchases you make, the better your chances of winning--**there is no limit to the number of times you may enter!**

Winners will be announced on December 31st.

* * * * *

Please note that our new fall hours begin tomorrow,

Monday, October 28th. They are:

Week Three: Spa Set



Monday-Friday 10 am to 4 pm

Saturday 9 am to 5 pm

Have a wonderful week!

www.woolandhoney.com

Melissa & Liz



Week Four: Zuzu's Petals

All the style of a shawllette without the fuss of trying to keep it around your neck! This easy to wear cowl is designed to mimic the look of a shawl casually draped as a scarf.

Pattern includes written and charted directions for two gauges to accommodate sport -worsted weight yarn. Knits up fast from the top down with a small amount of yardage and is simple enough for an advanced beginner.

Choose from these 4 colors:



Pumpkin



Jade



Pomegranate



Ultraviolet

Order our Zuzu's Petals Kit
[HERE.](#)

Only need the pattern? Find it
[HERE.](#)

 [Join our mailing list](#)

 [Forward to a Friend](#)

