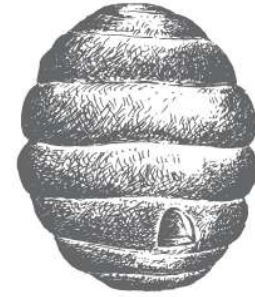


OCTOBER 6TH,  
2015



# NEWS FROM THE HIVE

[THE WEBSITE](#)  
[RAVELRY](#)

[THE BLOG](#)

[FACEBOOK](#)

[NEWSLETTER ARCHIVES](#)



## **YOTH TRUNK SHOW:** **OCTOBER 9-11**

We're spending every bit of our energies over the next few days preparing for this weekend's **YOTH trunk show**--we have been waiting for this for *months!*

On **Saturday, October 10th from 10 am to 6 pm**, Veronika Jobe, owner of YOTH Yarns in Seattle, WA, is traveling to Michigan *just* to visit our store and is bringing with her the largest, most impressive trunk show that Wool & Honey has ever hosted.

**EVER.**

There are just a few tickets left for our **weekend events--Friday's cocktail party + pre-sale event and Sunday's farmhouse brunch**--if you'd like to join us, please don't wait to sign up.



*Veronika at her home in Woodinville, WA--photo courtesy of YOTH Yarns*

As promised, it's time to send you a shopping guide to several patterns in both fingering (Little Brother) and DK-weight (Big Sister) yarn, ranging from one-skein projects (think Christmas gifts!) to classic sweaters you'll wear for years. Our goal is to make your experience, whether you're just stopping in to Saturday's trunk show or spending a few hours at one of our **other events**, a luxurious weekend full of some of the best things life has to offer--beautiful yarn, good food, great company and special treats.

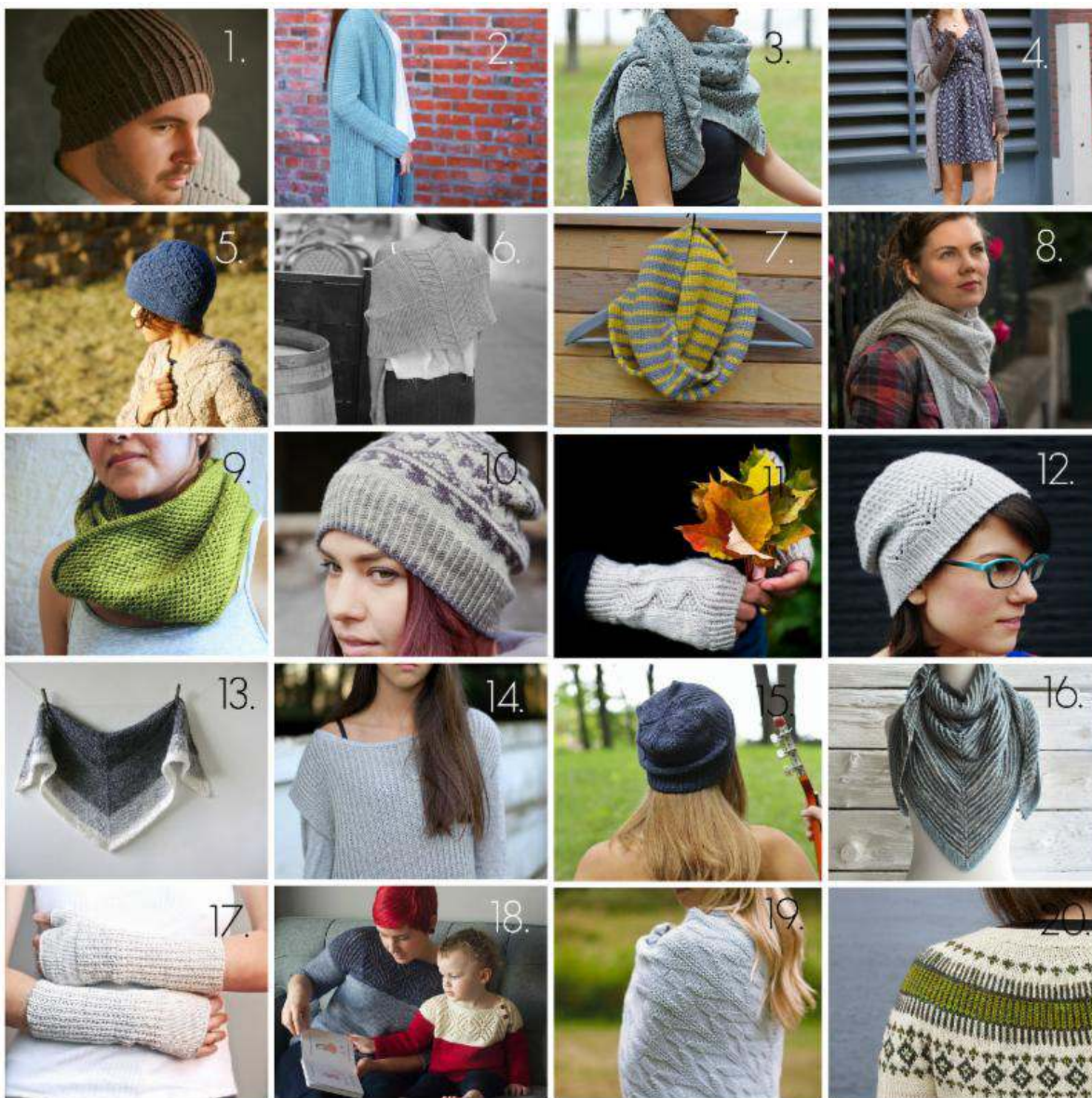
We find that when you come to a trunk show with some ideas before you walk in the door (*a hat for your sister, a cardigan for yourself, a shawl for your daughter's wedding next summer*), you're much more likely to make smart purchases. When you have specific patterns in mind, it's even easier to decide what to buy--the only decision is which colors to choose.

We've picked 20 of our favorites (at the moment!) for each yarn--the patterns marked with an asterisk are written for gradient sets. We encourage you to spend a bit of time this week studying these patterns--as well as searching for others, of course! Click on the links below and you'll visit each pattern's Ravelry page, where you can read descriptions, determine exact yardage amounts and purchase the pattern directly from the designers.

**And.**

Not only will we have TONS more patterns in the store this weekend, but Veronika is bringing all of her samples so that you can see how these stunning yarns knit and feel.

*Yardages are listed with the yarns below, including Puppies.*



## Big Sister

DK weight--21-24 sts/4 inches on US 5-7 needles  
231 yds--100 g (skein)

462 yds--200 g ("Puppies"/gradient set of 4 mini skeins)  
80% superwash Merino wool, 10% cashmere, 10% nylon

- 1. Rutherford by Veronika Jobe--1 skein.**
- 2. Big Sister by Kate Oates--5-9 skeins.**
- 3. Campside by Alicia Plummer--4 skeins.**
- 4. 004 by Veronika Jobe--5-10 skeins Main Color + 1-2 skeins Contrast Color.**
- 5. Golden Autumn by Lucy Sweetland--1-2 skeins.**
- 6. 006 by Veronika Jobe--4 skeins.**
- 7. Duotone Cowl by Orange Flower Yarn--1 skein in in Main Color + Contrast Color.**
- 8. Liebevoll by Ysolda Teague--2 skeins.**
- 9. Honey Cowl by Antonia Shankland--1-2 skeins.**
- 10. Izel by Veronika Jobe--1 skein each in Main Color + Contrast Color.**
- 11. Nalu Mitts by Leela Raabe--1 skein.**
- 12. Talus by Cory Ellen Boberg--1 skein.**
- \* 13. Nordic Wind by cabinfour--1 Big Sister Puppy (gradient kit).**
- 14. Mimic by Veronika Jobe--5-6 skeins.**
- 15. Rainy Tuesdays by Alicia Plummer--1 skein.**

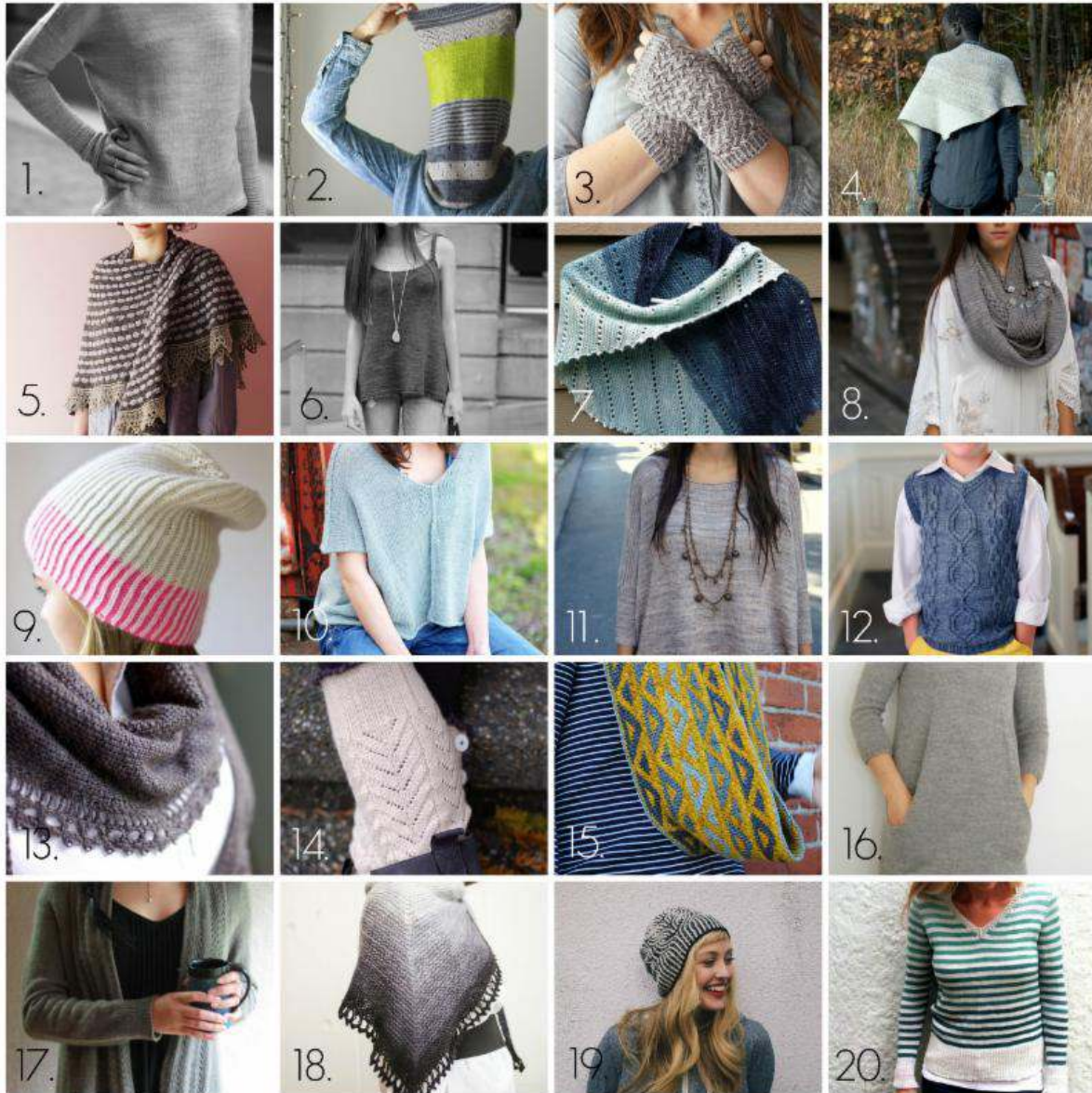
**16. Serena Shadow Shawl by Antonia Shankland**--2 skeins each Main Color + Contrast Color.

**17. Rathrevor Mitts by Jane Richmond**--1 skein.

**18. Snowflake by Tin Can Knits**--1-6 skeins Main Color + 1-2 skeins Contrast Color.

**19. Onward by Jane Richmond**--4 skeins.

**20. Clayoquot by Tin Can Knits**--2-10 skeins of Main Color + 1-2 skeins of CC 1 + 1 skein of CC 2.



## *Little Brother*

fingering weight--27-32 sts/4 inches on US 1-3 needles

435 yds--100 g (single skein)

870 yds--200 g ("Puppies"/gradient set of 4 mini skeins)

80% superwash Merino, 10% cashmere, 10% nylon

**1. 001 by Veronika Jobe**--3-6 skeins.

**2. 3 Color Cashmere Cowl by Joji Locatelli**--1 skein each of Main Color + CC1 + CC2.

**3. Qwist Mitts by Melanie Berg**--1 skein.

**4. Linook Shawl by Melanie Berg**--1 skein each of Main Color + CC1 + CC2 + CC3 in *Big Sister*.

**5. Pop Spots by Juju Vail**--1 skein each Main Color + Contrast Color.

**6. 003 by Veronika Jobe**--2-4 skeins.

\* **7. Imagine When by Joji Locatelli**--1 Little Brother Puppy (gradient kit).

**8. 005 by Veronika Jobe**--4 skeins.

**9. Color Dipped Hat by Purl SOHO**--1 skein each of Main Color + Contrast Color.

**10. Blanche by Veronika Jobe**--2 skeins.

**11. Boxy by Joji Locatelli**--4-5 skeins.

**12. Prepster Vest by Kate Oates**--1-2 skeins.

**13. Jana by Veronika Jobe**--1 skein.

**14. Rejoice by Veronika Jobe**--1-2 skeins Main Color + 1/2 skein Contrast Color.

**15. Urban Tribe Cowl by Grace Akhrem**--2 skeins Main Color + 1 skein each in CC1, CC2 + CC3.

**16. Still Light Tunic by Veera Valimaki**--4-6 skeins

**17. Old Town by Carol Sunday**--2-6 skeins

\* **18. Solarium Shawl by Silvia Bo Bilvia**--1 Little Brother Puppy (gradient kit)

**19. Vintage Prim Hat by Andrea Mowry**--1 skein each Main Color + Contrast Color.

\* **20. Signature Stripes by Amy Miller**--2-3 skeins Main Color + 1 Puppy (gradient kit).

\* \* \* \* \*



*a gorgeous selection of Puppies--gradient kits in both Big Sister and Little Brother  
(photo courtesy of YOTH Yarns)*

**Friday, October 9th--6 to 9 pm**

Cocktail Reception + Pre-Sale Party\*

**Saturday, October 10th: 10 am to 6 pm**

# YOTH Yarns Trunk Show

**Sunday, October 11th: 11 am to 2 pm**

Farmhouse Brunch\*

*\*The Cocktail Reception and the Farmhouse Brunch are open to ticketholders only.*

On **Friday evening**, we're hosting a cocktail reception and pre-sale party, where 25 ticketholders will receive goody bags, have the first pick of the trunk show and listen to a presentation by Veronika about YOTH yarns' story. We'll celebrate with both sparkling wine (L. Mawby, of course!) and a signature fall cocktail, as well as some of our favorite local cheeses and fruits.

**Saturday is the Main Event**--a trunk show with samples, TONS of yarn and Puppies (the gradient kits pictured in the photo above) in both fingering and DK weight--these amazing kits are only available at trunk shows and once they're gone, they're gone. We'll have piping hot coffee at the ready and there's a good chance Gallagher's famous pumpkin doughnuts will be here. We have more yarn in the store right now than we have ever, *ever* had (EVER!) and if you've been waiting to take a road trip to Wool & Honey, there's never been such a good excuse.

**The Saturday trunk show is open to everyone.**

On **Sunday morning**, we'll have a brunch at The Granary, where 25 ticketholders will receive goody bags, eat a farm-fresh brunch, and knit with Veronika while she shares tips & tricks on knitting, designing and the process involved in creating a yarn company. The

Granary is just six miles north of Wool & Honey, and with its open kitchen, huge wraparound porch and loft bedroom, it serves as a year-round cottage nestled on a 300-acre farm.

*(We'll be emailing brunch guests directions to The Granary in a separate email at the end of the week.)*



**You may purchase only ONE ticket--you may choose one event or the other, so that the greatest number of customers can have a chance to participate in these special events.**

Purchase a YOTH event ticket **HERE**.

Every person who purchases **a ticket** will ALSO be receiving a swanky goody bag, which includes an exclusive YOTH canvas tote that is only available at events.

*Please note: if you are having issues with ordering online, it can often be a browser issue. Try another browser (Internet Explorer, Firefox, Safari) instead.*



*(images courtesy of YOTH yarns)*

Questions? Please feel free to call us **(231) 228-2800**.



**WOOL & HONEY**  
(231) 228-2800  
woolandhoney@gmail.com  
<http://www.woolandhoney.com>

*Wool & Honey is a bricks-and-mortar yarn shop located in Cedar, MI,  
just 15 minutes west of Traverse City,  
 smack dab in the middle of The Most Beautiful Place in America.  
 We love cherries, wine, beautiful beaches and you guessed it—yarn.  
 Can't stop in to see us? We ship worldwide every day.*

[www.woolandhoney.com](http://www.woolandhoney.com)