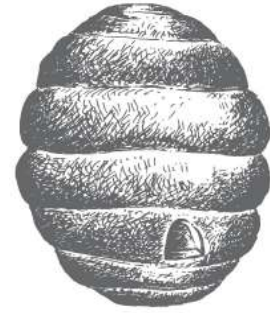


OCTOBER 14TH,
2016



NEWS FROM THE HIVE

[THE WEBSITE](#) [THE BLOG](#) [FACEBOOK](#) [NEWSLETTER ARCHIVES](#)
[RAVELRY](#)



A CLASS WITH DESIGNER JULIE HOOVER **OCTOBER 29TH, 2016**

Warm, woolen mittens, cozy Aran sweaters, nubby, flecked tweed--- quintessential Autumn. We are over the moon about our **upcoming weekend** with knitwear designer **Julie Hoover** and **Brooklyn Tweed company founder Jared Flood** **October 28-30th**. They're visiting Northern Michigan to spend the entire weekend with our hive--we've been looking forward to **this weekend** all year. Read all about the weekend's events **HERE**.



* * * * *

Often in knitting, we'll have cast on (or bound off) a piece, only to discover that the neckline or the entire hat itself is too tight to fit over our heads. A tubular edge--a stretchy, flexible method of casting on and binding off--can offer a solution. In **this class**, Julie will teach students how to cast on and bind off, giving them the opportunity to add these incredibly useful techniques to their knitting toolbox.

There are 10 tickets available on a first-come, first-serve basis. The class will be 2 hours in length on Saturday, October 29th and is \$45. Students will be given the exact time and supply list on October 24th.

Sign up for **Julie's class HERE**.

Julie Hoover is an Ann Arbor-based knitwear designer, designing garments for her own line, as well as Manos del Uruguay, Kogle and is a member of the Brooklyn Tweed in-house design team. We are honored to have her teach at Wool & Honey.



Already planning your next (or first!) Brooklyn Tweed project? What if your perfect sweater project could meet you at the trunk show?

We are now taking pre-orders through for the **entire Brooklyn Tweed collection** to arrive just in time for the trunk show.

****** Pre-order by October 18th ******

We encourage you to spend a bit of time on Ravelry searching the **amazing collection of patterns** knit with Brooklyn Tweed yarns to find something--whether it's an accessory, a sweater or something for your home--that sings to you.

Just a few of our favorites....



Caspian by Jared Flood



Atlas by Jared Flood



Woodfords by Elizabeth Doherty



Levenwick by Gudrun Johnston

Please



Snoqualmie by Michele Wang



Sheltered by Andrea Mowry

support these knitwear designers by ordering their patterns directly from them via Ravelry.

Their pattern collections can be found in lookbook form **HERE**, as well as stand-alone patterns by Jared, Julie and the entire Brooklyn Tweed Team found **HERE**.

Find **Brooklyn Tweed Loft** **HERE**.

Find **Brooklyn Tweed Shelter** **HERE**.

Find **Brooklyn Tweed Quarry** **HERE**.

Orders must be placed by 5 pm on Tuesday, October 18th to arrive in time for the trunk show on October 29th.

photos courtesy of Brooklyn Tweed



WOOL & HONEY
(231) 228-2800
thebuzz@woolandhoney.com
<http://www.woolandhoney.com>

*Wool & Honey is a bricks-and-mortar yarn shop located in Cedar, MI,
just 15 minutes west of Traverse City,
 smack dab in the middle of The Most Beautiful Place in America.
 We love cherries, wine, beautiful beaches and you guessed it—yarn.
 Can't stop in to see us? We ship worldwide every day.*

www.woolandhoney.com

Copyright © 2016 Wool & Honey. All Rights Reserved.