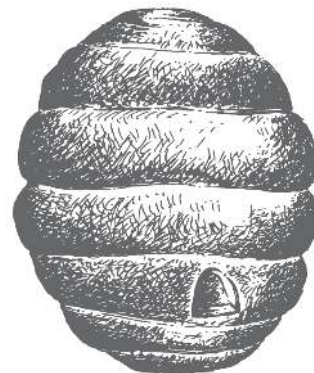


OCTOBER 12TH,  
2018

# NEWS FROM THE HIVE



[THE WEBSITE](#) [INSTAGRAM](#) [THE BLOG](#) [FACEBOOK](#)  
[RAVELRY](#)



---

**NEW FIELD BAG:**  
WAXED PLUM



*Introducing the newest of the **Fringe Field Bags**....*  
**Waxed Plum.**

You know that feeling when something new comes along, that feeling when something is so extraordinary, you hadn't realized its absence until you saw how naturally it fits into the place it was always meant to be?

We are unequivocally in love with the full range (almost entirely neutral, save the Blue) of **Fringe Field Bags**; if you have one, you absolutely understand the cult-like following they have, and we hope that you, like us, believe the **Waxed Plum** was undeniably the missing piece. If you don't have a Field Bag, but you've been tempted, on the fence, or waiting for a color, perhaps, that was a little more *you*, well. Dare we say this might be it? A gorgeous plummy wine (both red *and* purple!), this waxed canvas bag is stain-resistant, water-resistant, will soften and age with grace, and perhaps best of all, made by hands (and brilliant minds!) in the USA.



*limited edition Field Bag in 'Hank'*



*Field Bag in Waxed Natural*

Portable, stuff-able and capable of carrying 2-3 small projects, Field Bags are the consummate project bag for traveling knitters. There are impeccably-designed interior pockets for notions, double-pointed needles, pens, a

folded 8 1/2" x 11" pattern, and grommets for threading and separating yarn balls for colorwork. They can be easily tossed into a larger purse or a tote bag, and two Field Bags can be tucked neatly inside their big sister, the **Porter Bin**.



*the **Porter Bin** in Butterscotch*

And of course we'd be remiss if we didn't mention the fact that Field Bags provide the ideal backdrop for the ubiquitous **enamel pin**. We don't mind saying that we've got a stellar collection here at the shop; whether you want to say something quirky, sweet or pledge allegiance to the humble S'more, we've got **the pin** for you.



*(The Leelanau collection, as designed by Maggie + Lauren of Leland Gal + Northpointe Studio.)*

Find the Fringe Field Bag [HERE](#).

Find the Fringe Porter Bin [HERE](#).

Find our collection of Enamel Pins [HERE](#).

---

**WOOL & HONEY KNIT-A-LONG:**  
STARTS MONDAY



## **October 15th-November 15th, 2018** **Wool & Honey Sweater Knit-A-Long**

Been thinking about joining us? There's still time! We've fully restocked the entire **Brooklyn Tweed line**--including **Loft**--and have the full selection of colors available. If you were on the fence about joining us before (and want to get in on the *amazing* prizes!), you can still join us. And yes, we'll still offer that 15% discount--the needles, the pattern AND the yarn.

Already signed up? If you're local, **your yarn is available for pickup**, and if you're joining us remotely, your yarn should arrive on your doorstep within **the next two days**.

**Cast on begins Monday**, October 15th, at 12:00 a.m. Absolutely NO knitting beforehand--unless it's for your swatch, that is.

Your package includes a physical copy of the pattern, and on the back is a scratch-off Ravelry download coupon. Download the digital copy of the pattern and add this sweater to your Ravelry projects (uploading pictures as you get further along) so that we--and the entire knitting community!--can keep up with your progress there. We've got **a thread** going in our Ravelry group **HERE**--we hope you'll add your two cents to the conversation.

**Help every Thursday:** We'll be devoting our Thursday evening Open Knitting to the **Wool & Honey KAL** October 15th-November 15th--we'll be here to help you if you get in a rut or need help navigating the pattern, but primarily it'll be a chance for us to motivate each other.

When you're done, we'll expect to see finished shots of you and your sweater! Email us at [thebuzz@woolandhoney.com](mailto:thebuzz@woolandhoney.com), use #woolandhoney AND #woolandhoneysweater **on Instagram** or post on **our Facebook page**.



**Prizes:** EVERY single participant who completes their sweater during the time frame will receive a *NEW* style of our signature bee journal--a custom heirloom from Ted Gilmer of Leelanau Trading Company--a \$45 value) AND every single participant who completes their sweater within the time frame will be entered in a drawing to win a **Knitter's Backpack** in the winner's color choice--a \$94 value.

**These are-- *without a doubt*--  
the biggest prizes we've ever awarded for knit-a-long  
finishers.**





*\* Please note that Embers, the colorway Andrea used in the original sample will NOT be available for the Knit-A-Long. We are completely sold out and it*

*will be backordered for another six weeks. Our sample is Hayloft and was knit by our good friend Melissa Littlefield, who can be found on IG as knittingthetash. \**

Questions? Call us at (231) 228-2800 or stop in this weekend to sign up.

### **Hours:**

*Friday, October 12th: 10 am to 5 pm*

*Saturday, October 13th: 9 am to 4 pm*

*Sunday, October 14th: closed*

*Monday, October 15th: 10 am to 5 pm*

Find our entire selection of **Brooklyn Tweed** **HERE**.

---



## **WOOL & HONEY**

(231) 228-2800

thebuzz@woolandhoney.com

http://www.woolandhoney.com

*Wool & Honey is a bricks-and-mortar yarn shop located in Cedar, MI,  
just 15 minutes west of Traverse City,  
 smack dab in the middle of The Most Beautiful Place in America.  
 We love cherries, wine, beautiful beaches and you guessed it—yarn.  
 Can't stop in to see us? We ship worldwide every day.*

[www.woolandhoney.com](http://www.woolandhoney.com)

---