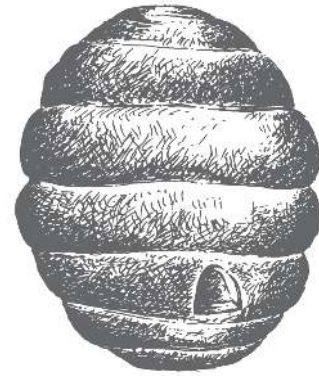


JULY 28TH,
2017

NEWS FROM THE HIVE



[THE WEBSITE](#) [BLOG](#) [INSTAGRAM](#) [FACEBOOK](#) [RAVELRY](#)



FRINGE PORTER BIN: NOW IN ARMY GREEN

The **Fringe Supply Co Field Bag** has become a favorite among knitters by being as hard-working as it is good-looking, and we're just as in love with the Porter Bin--a bigger, even more rugged project bag for sweater knitters or those who like to keep multiple WIPs in one bag.

And, for 90s grunge lovers and aficionados of all things Army-issued, it's as if the skies have parted and choirs of angels have burst into one pure, dulcet strain: the Porter Bin is now available in

ARMY GREEN.



The Porter is heavy-duty cotton canvas with multiple interior pockets and a wide flat bottom - it sits upright and open, and stores flat when not in use. It's great for storage, for organizing all kinds of projects, for road trips (so great for road trips!), or for sitting at the ready next to your favorite chair.

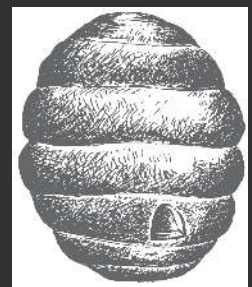
Find the **Porter Bin**--in the NEW Army Green, as well Black and Classic White--**HERE**.

[WEBSITE](#) | [BLOG](#) | [FACEBOOK](#) | [RAVELRY](#) | [INSTAGRAM](#)

WOOL & HONEY

(231) 228-2800
thebuzz@woolandhoney.com

<http://www.woolandhoney.com>



Wool & Honey is a bricks-and-mortar yarn shop located in Cedar, MI, just 15 minutes west of Traverse City, smack dab in the middle of The Most Beautiful Place in America.

We love cherries, wine, beautiful beaches and you guessed it--yarn.

Can't stop in to see us? We ship worldwide every day.

