

JULY 26TH,
2018

NEWS FROM THE HIVE



[THE WEBSITE](#) [INSTAGRAM](#) [THE BLOG](#) [FACEBOOK](#)
[RAVELRY](#)



NEW FROM QUINCE & CO:
WHIMBREL, A WORSTED WEIGHT COTTON



*100% California Cleaner Cotton™
grown, spun and dyed in the USA*

worsted weight
180yd--100g
4.5 sts per inch on size US 7 [4.5 mm] needles

Big sister to **Willet**, Quince's worsted weight **Whimbrel** is sourced from the same high-quality, responsibly grown Cleaner Cotton™. (Visit Quince's blog post [HERE](#) to get the full scoop on this amazing fiber.) The fiber's long staple length yields a deliciously soft yarn with a hint of pretty sheen. At a gauge of 4.5 stitches per inch, this versatile 3-ply cotton yarn is destined to become a true workhorse, suitable for garments, shawls, and accessories for all seasons.

Not sure what to knit with **Whimbrel**?
Try one of our kits!



Whitman Hat & Sweater Kit



Sullivan Sweater Kit

Find the **Whitman Hat & Sweater Kit** **HERE**.

Find the **Sullivan Sweater Kit** **HERE**.

Find our entire **Whimbrel Collection** **HERE**.

LINEN + COTTON:
MOJAVE FROM KELBOURNE WOOLENS



Mojave

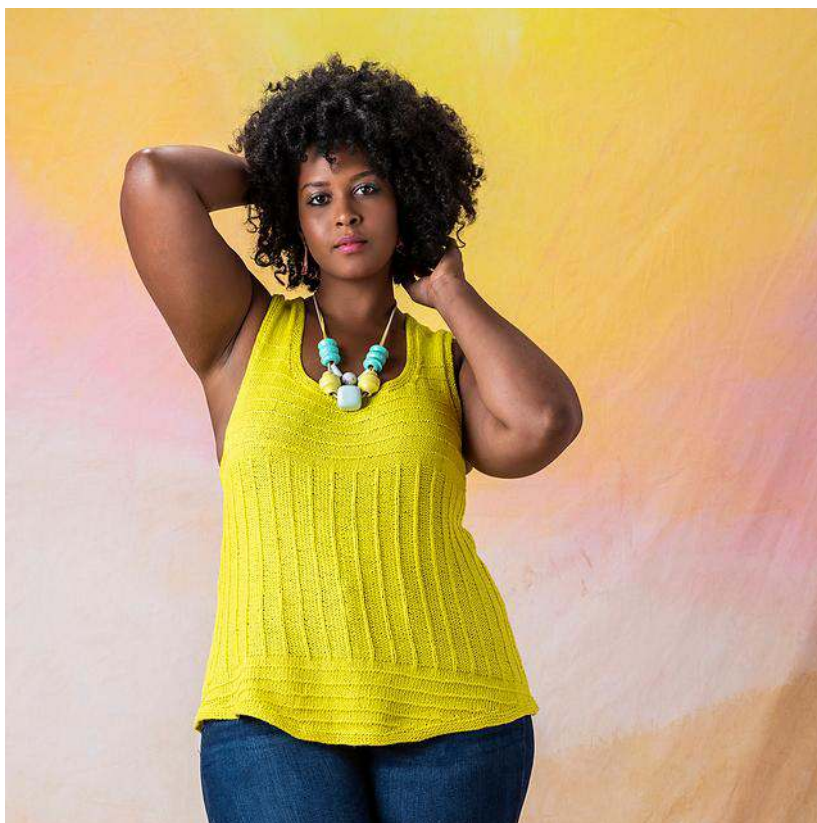
60% cotton, 40% linen

185 yds--50 g

22-24 sts = 4 inches

US 4-6 (3.5-4.0 mm)

Meghan's love of cellulose-based fibers led to the development of **Mojave**. It is a sport weight yarn, consisting of five sets of very fine 2-plys. The result is a lightweight yarn that is strong and smooth with great stitch definition. This pima cotton and linen blend is as pleasant to knit with as it is to wear, and, as a bonus, it can be machine-washed!



Not sure what to knit with **Mojave**? We love these lightweight sweaters for

summer and transitional weather, including **Keane Wonder** (a structured tank), **Llana del Rio** (a pullover with a lacy panel) and **Evening Star** (a flowy yet sophisticated cardigan).

*We especially love that **this collection** was styled with a REAL woman's body in mind, and modeled by a woman of color--two typically glaring omissions within the knitting industry.*



Find the happy, playful palette of the **Mojave Collection**
HERE.



**A NEW STITCH MARKER NECKLACE:
BEACH GLASS**

We are in LOVE with our newest **stitch marker necklace:
beach glass!**



You know how we have always said how we think our **stitch markers** are like jewelry for your knitting needles? What about a necklace to hold them so you really can wear them like jewelry? You slip the stitch markers onto the large ring, where they'll stay until you're ready to use them in your knitting. The ring and fixture are 100% sterling silver and comes on an 18-inch black rubber chain. The Petoskey stone has three nugget-style stones stacked on top of each other and the beach glass has three translucent, blue-green tumbled stones stacked on top of each other.



Petoskey stone stitch marker necklace + beach glass markers



Leland blue stitch markers

Find our stitch marker necklace **HERE.**

Find our entire [stitch marker collection](#) **HERE**.

**BROOKLYN TWEED ARBOR:
NEW SUMMER COLORS**



The newest colors of [Brooklyn Tweed Arbor](#) have arrived and they're an ethereal addition to the already majestic palette...and pair beautifully with our [signature stone stitch markers](#).

L to R: [Norway](#), [Lovat](#), [Mesa](#) + [Arabesque](#), with [beach glass](#), [Leland Blue](#), [mother-of-pearl](#) and [Petoskey stone](#).

Find our [Brooklyn Tweed Arbor collection](#) **HERE**.

Find our [signature stitch markers](#) **HERE**.

WOOL & HONEY

(231) 228-2800

thebuzz@woolandhoney.com

<http://www.woolandhoney.com>



*Wool & Honey is a bricks-and-mortar yarn shop located in Cedar, MI,
just 15 minutes west of Traverse City,
 smack dab in the middle of The Most Beautiful Place in America.
 We love cherries, wine, beautiful beaches and you guessed it—yarn.
 Can't stop in to see us? We ship worldwide every day.*

www.woolandhoney.com

Copyright © 2018 Wool & Honey. All Rights Reserved.