

JULY 15TH,
2017

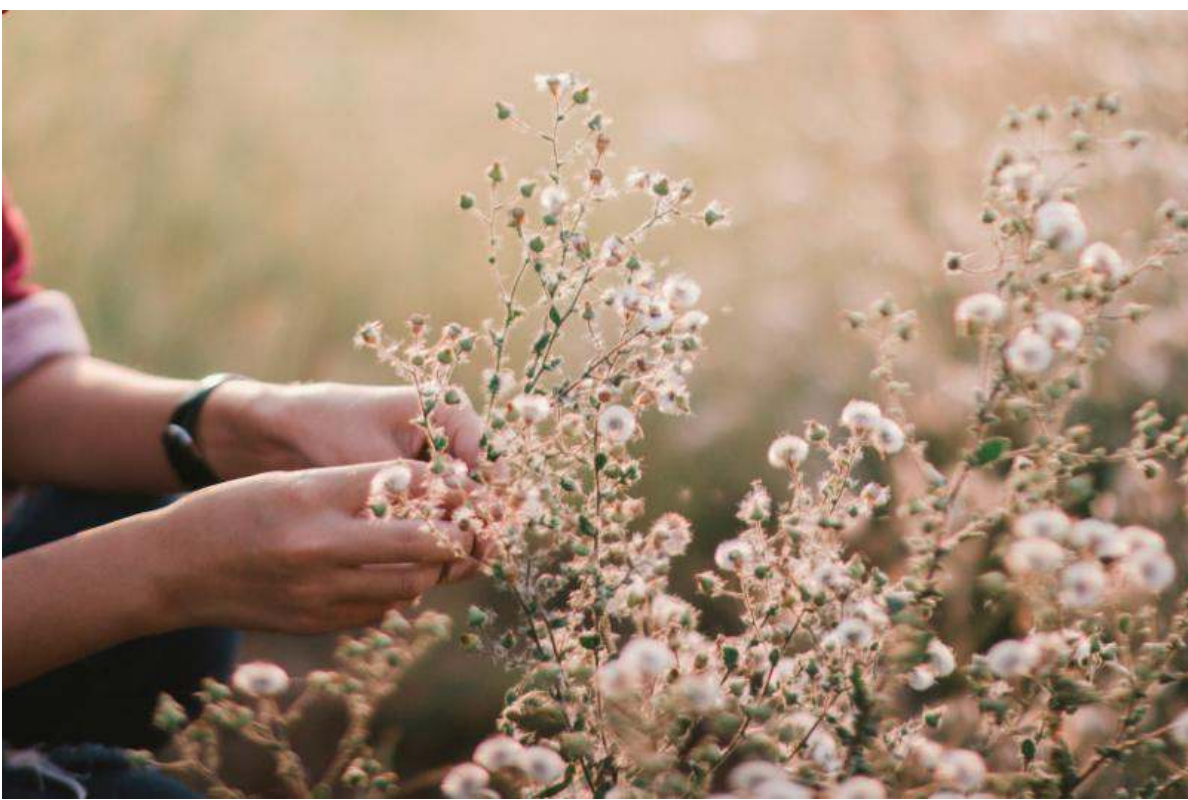
NEWS FROM THE HIVE



[THE WEBSITE](#) [INSTAGRAM](#) [BLOG](#) [FACEBOOK](#) [RAVELRY](#)



**NATURAL DYEING + FARM-TO-TABLE LUNCHEON:
WHY KNOT FIBERS + BIRCH POINT FARM**



Lottery Signups Now Open
Saturday, July 15th
9 am--2 pm EST

On **Saturday, August 5th** and **Sunday, August 6th**, Kat and Claire of Why Knot Fibers will be leading an all-day intensive natural dye workshop, where 24 participants (12 on each day) will receive focused, hands-on instruction for dyeing yarn with dyestuffs that are grown and foraged right on the farm, including willow, madder, goldenrod and indigo. Workshop participants will gather, prepare and dye their own yarn, breaking for a family-style, farm-fresh lunch prepared by farmer and foodie Jess Piskor of Birch Point Farm.

The lunch will feature an in-season, vegetable-heavy menu, with locally raised meat, as well as vegan options. Each participant will be given a goody bag that includes two skeins of Michigan-grown yarn to dye; more yarn (for those seeking larger projects) will be available for purchase at the farm.



Tickets for the Saturday and Sunday workshops are limited to 24 total spaces--12 each for Saturday and Sunday. Tickets will be available by lottery drawing; the lottery drawing begins at 9 am *today*, Saturday, July 15th and one lucky winner will be

attending the workshop FREE. Winners will be announced on Monday, July 17th. The trunk show on Friday evening from 6-8 is open to everyone.

Find the tickets for the Natural Dye Workshop HERE.

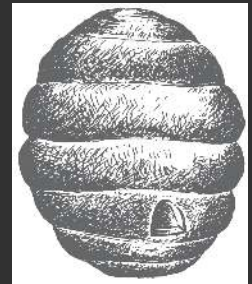
Read about the entire weekend HERE.

[WEBSITE](#) | [BLOG](#) | [FACEBOOK](#) | [RAVELRY](#) | [INSTAGRAM](#)

WOOL & HONEY

(231) 228-2800
thebuzz@woolandhoney.com

<http://www.woolandhoney.com>



Wool & Honey is a bricks-and-mortar yarn shop located in Cedar, MI, just 15 minutes west of Traverse City, smack dab in the middle of The Most Beautiful Place in America.

We love cherries, wine, beautiful beaches and you guessed it--yarn.

Can't stop in to see us? We ship worldwide every day.

© 2017 Wool & Honey. All Rights Reserved.