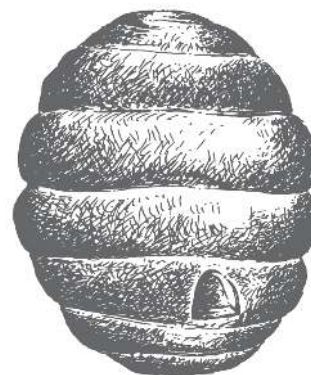


FEBRUARY 23RD,
2018

NEWS FROM THE HIVE



[THE WEBSITE](#) [INSTAGRAM](#) [THE BLOG](#) [FACEBOOK](#)
[RAVELRY](#)



BRAND NEW YARN:
STONE WOOL CORRIEDALE



We weren't sure it was even possible to make room in our hearts for yet another farm-fresh yarn, but here we are again, happy to introduce **Stone Wool Corriedale**.

With **Stone Wool's** third mill-spun yarn, developed in partnership with Twig & Horn, they've created a cozy Aran weight yarn showcasing the warmth and depth of natural wool, put up in oversized quarter-lb skeins.

The **Corriedale breed** developed from crossing fine-wool Merinos with longwool Lincoln sheep, a combination that created soft-to-the-touch wool with a long staple length. **Stone Wool Corriedale** is spun from carefully sourced Corriedale fleeces, and strikes the perfect balance of hard-wearing and supple. Knits can be worn close to the skin, and will wear well as they

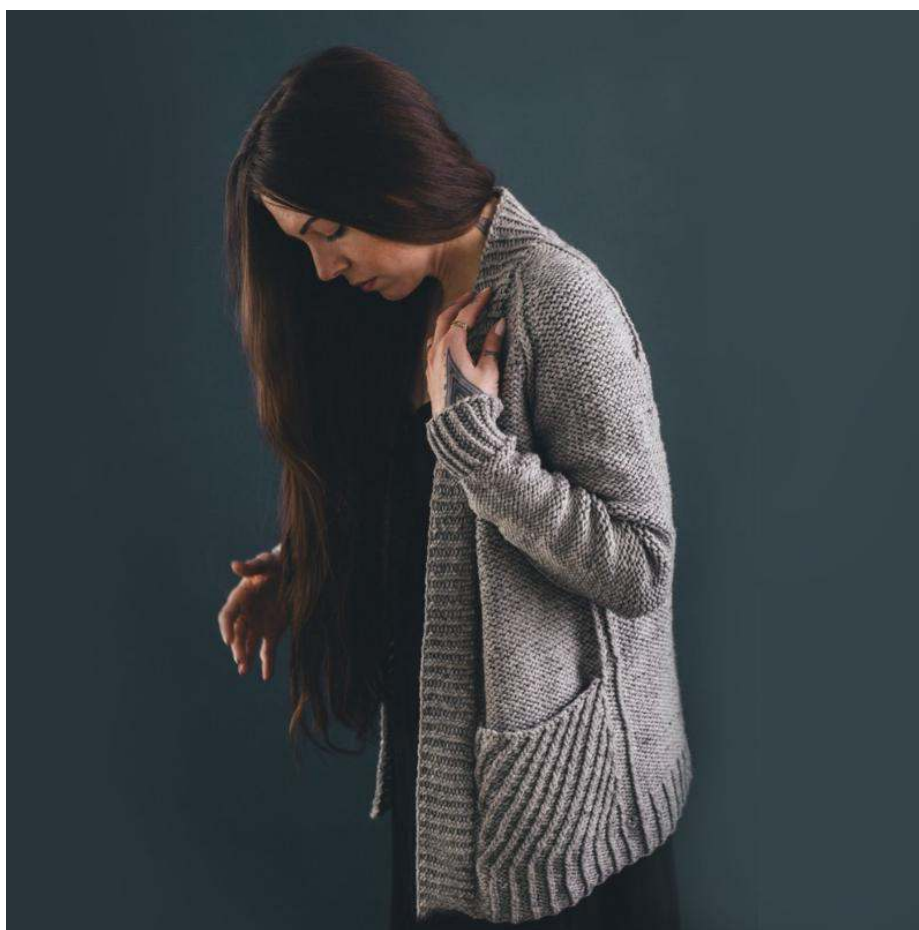
age from season to season.

Stone Wool Corriedale's palette and colorway names were inspired by the wealth of subtle colors present in row crops, paying homage to the lifeblood agricultural industry in the Hudson Valley. Each of its **colorways** has a lovely muted heather effect, adding depth and texture to each shade.

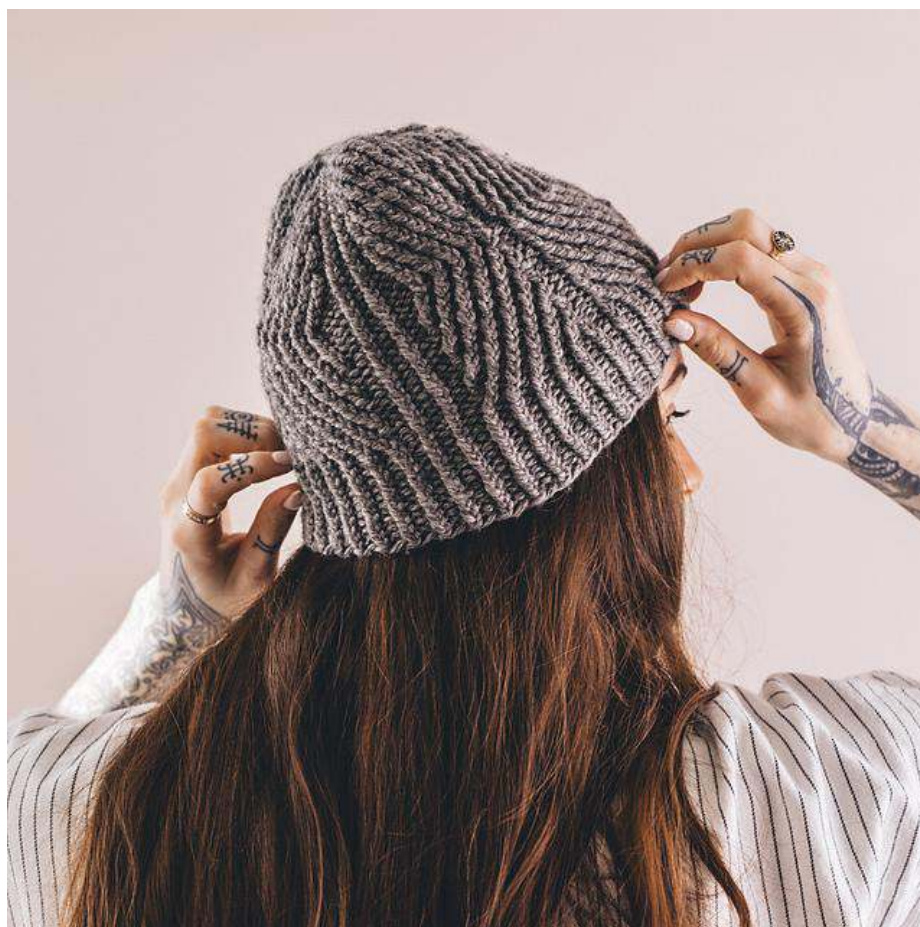
Need some ideas for knitting with this gorgeous yarn?



Audrey Mitten Kit



Ishii Cardigan Kit



Willoughby Hat Kit



Rin Pullover Kit

*While we don't sell individual skeins of **Stone Wool Corriedale** directly through online purchase; we do take orders over the phone*

***231.228.2800 or via email
thebuzz@woolandhoney.com***



WOOL & HONEY
(231) 228-2800
thebuzz@woolandhoney.com
<http://www.woolandhoney.com>

*Wool & Honey is a bricks-and-mortar yarn shop located in Cedar, MI,
just 15 minutes west of Traverse City,
smack dab in the middle of **The Most Beautiful Place in America**.
We love cherries, wine, beautiful beaches and you guessed it—yarn.
Can't stop in to see us? We ship worldwide every day.*

www.woolandhoney.com

